

WALLS  
in Style

*Lorento*  
Low VOC





*Color your life; We'll Paint it for you!*

Whether you are a man or a woman, young or old, professional or non – professional, from upper class or middle class, elegant or modest - EACH OF US, has our individual unique color preferences. Our individual distinct color inclinations oftentimes express and / affect our moods, imply a somehow culturally accepted symbolisms, hint emotions trajectories, which in a way form part of our individual dynamics of diverse expressions.

We, at **RITVER**, perfectly understand the high importance of providing various beautiful decorative COLOR selections to meet individual's need for exceptional, elegant interior designs essentials. We make various and customized color scheme combinations available in the market to decorate all sorts of room painting requirements. From Italian Stucco to Artista, from Thickness Stucco to Lorento, come to us - we will give you the best ambience and perfect atmosphere you can ever think of!

At **RITVER** – we give the best effects for your walls!







LO 3003



LO 3009



LO 3005



LO 3008



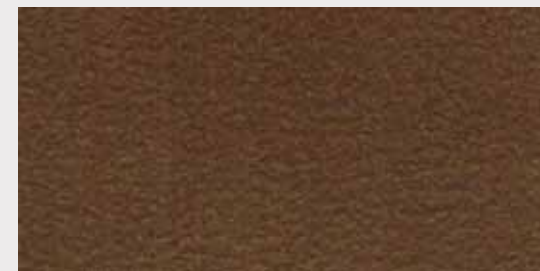
LO 3012



LO 3002



LO 3001



LO 3011



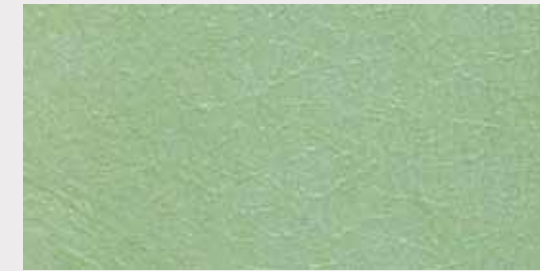
LO 3006



LO 3004



LO 3015



LO 3014



LO 3007



LO 3013



LO 3010







**LORENTO** is a top of the range specially formulated acrylic emulsion based latex coating pigmented system with the right properties to build various decorative patterns. Its good virtues include good washability, superior scrub resistance, smooth finish, color acceptance & retention property and a superior finish. Its unique formula is specially prepared to match golden ambience of the interiors and decorations thereof.

- **Substrate:** Concrete, cement plaster, masonry and gypsum.
- **Area of Use:** Interior decorations.
- **Finish:** Smooth, Glossy.
- **Color :** Any Golden Color Required.
- **Spread Rate:** Covers 8 to 10 m<sup>2</sup>/L.
- **Drying Time (30° C) :** Set to touch: 1 – 2 hours.  
Ready for Recoat: app 2 - 3 hours.

### Typical Paint System

Recommended system to be applied as per surface preparation.



*\*stir well before usage.*

Before to start any application of Lorento, we must prepare the wall by using Ritver primer, stucco putty and emulsion top coat.



### لورينتو

لورينتو من أصباغ الديكورات العالية الجودة تتكنا من الحصول على أشكال ذهبية لؤلؤية . من محاسن أصباغ لورينتو أنها صلبة قابلة للتنظيف , وهي ذات تركيبة خاصة تمنح الحوائط الداخلية رونقا "وجمالا".

أماكن الإستخدام : الأسطح الداخلية ( الإسمنت, الطابوق, الجبس )

الملمس : ناعم ذو لمعان ذهبي لؤلؤي

الألوان : حسب الطلب

معدل التغطية : 8 - 10 (مترمربع / لتر)

معدل الجفاف (30 درجة مئوية) : 1 - 2 ساعة

لطبقة ثانية يجب الإنتظار من 2 - 3 ساعات .

### RECOMMENDED TOOLS:

#### Brush



For more details on our way of application and method of use, follow our TDS.

## Decorative Products



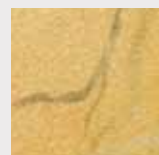
**ARTISTA** is a top of the range specially formulated acrylic emulsion based latex coating pigmented system with the right properties to build various decorative patterns. Its good virtues include good washability, superior scrub resistance, smooth finish, color acceptance & retention property and a superior finish. Its unique formula is specially designed to match ambience of the interiors and decorations thereof.



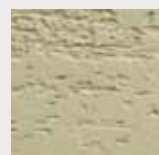
**ATMOSPHERA** is a top of the range specially formulated acrylic emulsion based latex coating pigmented system with the right properties to build various decorative patterns. Its good virtues include good washability, superior scrub resistance, colour acceptance & retention property and a superior finish. Its unique formula is specially prepared to match ambience of the interiors and decorations thereof.



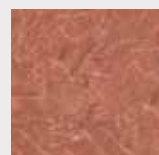
**ITALIAN STUCCO** is a top class water based marble finish which enriches the ambience of the interiors of the room. It creates a shiny marble type finish and ends up in boundless patterns utilizing the imagination of an artist and the skills of the applicator and forms attractive marble like effects on various surfaces. The finish can be extended to different patterns of various colors and also accepts metallic pigments like gold, silver, pearl finish etc., the product is very hygienic and has good anti fungal properties.



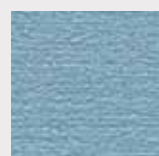
**LORENTO** is a top of the range specially formulated acrylic emulsion based latex coating pigmented system with the right properties to build various decorative patterns. Its good virtues include good washability, superior scrub resistance, smooth finish, colour acceptance & retention property and a superior finish. Its unique formula is specially prepared to match golden ambience of the interiors and decorations thereof.



**MARMARINO** is a top class water based finish which enriches the ambience of the interiors of the room. It creates a marble type finish and ends up in boundless patterns utilizing the imagination of an artist and the skills of the applicator and forms attractive marble like effects on various surfaces. The finish can be extended to different patterns of various colors. The product is very hygienic and has well anti-fungal properties.



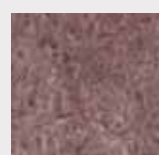
**MULTICOPEARLO** is a top of the range specially formulated acrylic emulsion based latex coating pigmented system with the right properties to build various decorative patterns. Its good virtues include good washability, superior scrub resistance, smooth finish, colour acceptance & retention property and a superior finish. Its unique formula is specially designed to match ambience of the interiors and decorations thereof. It gives a multicolor pearl effect where you can see different colors can be seen at the same time by just changing the viewing angle.



**EFFETTO JEANS** is a top of the range specially formulated acrylic emulsion based latex coating pigmented system with the right properties to build various decorative patterns. Its good virtues include good washability, superior scrub resistance, smooth finish, colour acceptance & retention property and a superior finish. Its unique formula is specially prepared to match ambience of the interiors and decorations thereof. This effect has the exact finish of the original jeans.



**PATINATO** is a top of the range specially formulated acrylic emulsion based latex coating with the right properties to build various decorative patterns. Its good virtues include good washability, superior scrub resistance, smooth finish, color acceptance & retention property and a superior finish. Its unique formula is specially prepared to match ambience of the interiors and decorations thereof.



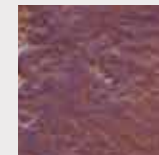
**PERLATO EFFETTO** is a top of the range specially formulated acrylic emulsion based latex coating pigmented system with the right properties to build various decorative patterns. Its good virtues include good washability, superior scrub resistance, smooth finish, colour acceptance & retention property and a superior finish. Its unique formula is specially prepared to match ambience of the interiors and decorations thereof. It gives a pearly shiny effect.



**THICKNESS STUCCO** is a top of the line water based finish that brings history to the present day era. It exhibits a finish very much akin to the historical concepts of the paintings and enhances a richness with a traditional look. It creates a rough but appealing finish and can end up in different patterns utilizing the imagination of an artist and the skills of the applicator. The product can be over coated with patinato or lorento... to give a pleasing look. The product is very hygienic and has a good anti fungal properties.



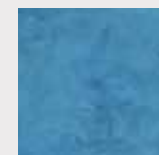
**SANDICA** is a top of the range specially formulated acrylic emulsion based latex coating pigmented system with the right properties to build various decorative patterns. Its good virtues include good washability, superior scrub resistance, color acceptance & retention property and a superior finish. Its unique formula is specially prepared to match ambience of the interiors and decorations thereof. This effect has the exact sand finish.



**FERRO ANTICO** is a top class water based finish which enriches the ambience of the interiors of the room. It creates an antique type finish and ends up in boundless patterns utilizing the imagination of an artist and the skills of the applicator and forms attractive effects on various surfaces. The finish can be extended to different patterns of various colors. The product is very hygienic and has well anti-fungal properties.



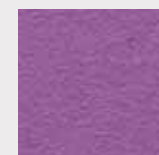
**TRAVERTINO** is a top class water based finish which enriches the ambience of the interiors of the room. It creates a marble type finish and ends up in boundless patterns utilizing the imagination of an artist and the skills of the applicator and forms attractive marble like effects on various surfaces. The finish can be extended to different patterns of various colors. The product is very hygienic and has good anti-fungal properties.



**AMALFI** is a top of the range specially formulated acrylic emulsion based latex coating pigmented system with the right properties to build various decorative patterns. Its good virtues include good washability, superior scrub resistance, smooth finish, colour acceptance & retention property and a superior finish. Its unique formula is specially prepared to match ambience of the interiors and decorations thereof. It gives a pearly shiny effect.



**COCCODRILLO** is a top of the line water based finish that has the Crocodile animal print finish. It creates a rough but appealing finish and can end up in different patterns utilizing the imagination of an artist and the skills of the applicator. The product can be over coated with patinato or lorento... to give a pleasing look. The product is very hygienic and has a good anti fungal properties.



**SABBIA PERLATA** is a top of the range specially formulated acrylic emulsion based latex coating pigmented system with the right properties to build various decorative patterns. Its good virtues include good washability, superior scrub resistance, colour acceptance, retention property and a superior finish. Its unique formula is specially prepared to match ambience of the interiors and decorations thereof. It has the effect of fine pearly sand.



**METALLICO** is a top class water based finish which enriches the ambience of the interiors of the room. It creates a modest type finish and ends up in boundless patterns utilizing the imagination of an artist and the skills of the applicator and forms attractive marble like effects on various surfaces. The finish can be extended to different patterns of various colors. The product is very hygienic and has well anti-fungal properties.



**POMICE** is a top class water based marble finish which enriches the ambience of the interiors of the room. It creates a shiny marble finish and ends up in boundless patterns utilizing the imagination of an artist and the skills of the applicator. The finish can be extended into different patterns of various colors and also embrace metallic pigments like gold, silver, pearl finish etc., The product is very hygienic and has good anti fungal properties. The maintenance cost if very low as it requires only touch up after a little sanding.



**RUSTICO** is a top of the range specially formulated acrylic emulsion based latex coating pigmented system with the right properties to build various decorative patterns. Its good virtues include good washability, superior scrub resistance, colour acceptance, retention property and a superior finish. Its unique formula is specially prepared to match ambience of the interiors and decorations thereof. It has the effect of fine pearly sand.



**PITONE** is a top of the line water based finish that has the Python animal print finish. It creates a rough but appealing finish and can end up in different patterns utilizing the imagination of an artist and the skills of the applicator. The product can be over coated with patinato or lorento... to give a pleasing look. The product is very hygienic and has a good anti fungal properties.



Ritver Toll Free Number  
**800 PAINTS**  
(724687)

Follow us on  
**Twitter**

an us on  
**facebook**



Scan this QR CODE  
for RITVER information



Manufactured by Emver Paints Industry L.L.C which is member of EGBC

**UAE | OMAN | QATAR | KSA | IRAQ | LEBANON | ITALY | NIGERIA | CANADA**

**U.A.E:** Unit No. 1104-1109, 1 Lake Plaza Flat No. P112 - T2 Jumeirah Lake Towers Dubai, UAE P.O. Box 47381  
**Tel:** 800 PAINTS (Toll Free Hotline in UAE) ; +971 4 4504286 ; +971 4 4504287 | **Fax:** +971 4 4504274 ; +971 4 4504275 | info@ritver.com



ISO 9001-2008, ISO 14001-2004, ISO 18001-2007



**www.ritver.com**