

WALLS
in Style

Thickness Stucco
Low VOC

Pitone • Coccodrillo



RITVER

PAINTS & COATINGS

where paints come to life



Thickness Stucco



PW 3902 + Silver Leaf



PW 3902 + Gold Leaf



THICKNESS STUCCO is a top of the line water based finish that brings history to the present day era. It exhibits a finish very much akin to the historical concepts of the paintings and enhances a richness with a traditional look. It creates a rough but appealing finish and can end up in different patterns utilizing the imagination of an artist and the skills of the applicator. The product can be over coated with patinato or lorento... to give a pleasing look. The product is very hygienic and has a good anti fungal properties.

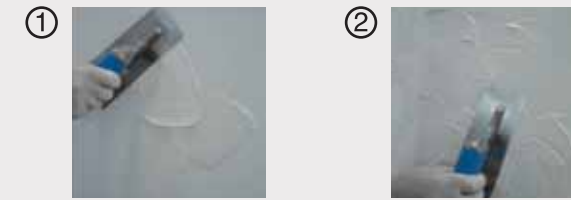
- **Substrate:** Concrete, plaster, masonry, gypsum.
- **Area of Use:** Interior with ability to overcoat if needed.
- **Finish:** Rough and plaster like.
- **Colour:** As per the end user demand.
- **Spread Rate:** Cover 1 to 1.5 m²/kg
The coverage is not very significant as it can be applied to varying thickness.
- **Drying Time (30° C):** Set to touch: 2 – 3 hours.
Ready for Recoat: at touch dry stage.

Typical Paint System

Recommended system to be applied as per surface preparation.



Before to start any application of Thickness Stucco, we must prepare the wall by using Ritver primer.



ثيكنس ستوكو

من الأصباغ المائية العالية الجودة التي تعطي الأسطح منظر تراثي على الطريقة العصرية ، كما أنها تكن المستخدم من الحصول على أشكال وتصاميم خشنة متنوعة وذلك حسب طريقة التطبيق .

يمكن حماية المنتج بإضافة طبقة من باتيناتو أو لورينتو ... وذلك لإعطاء أشكال متنوعة .

من محاسن أصباغ ثيكنس ستوكو أنها مواد مضادة للتلف وسهلة التطبيق .

أماكن الاستخدام : الأسطح الداخلية (الإسمنت ، الطابوق ، الجبس)

اللمس : خشن و نافر

الألوان : حسب الطلب .

معدل التغطية : 1 – 1.5 متر مربع / لتر حسب السماكة المطلوبة

معدل الجفاف (30 درجة مئوية) : 2 – 3 ساعات .

لطبقة ثانية يجب الإنتظار حين إنتهاء مرحلة جفاف الطبقة الأولى .

RECOMMENDED TOOLS:

Spatula



For more details on our way of application and method of use, follow our TDS.

Cocodrillo



COCCODRILLO is a top of the line water based finish that has the Crocodile animal print finish. It creates a rough but appealing finish and can end up in different patterns utilizing the imagination of an artist and the skills of the applicator. The product can be over coated with patinato or lorento... to give a pleasing look. The product is very hygienic and has a good anti fungal properties.

- **Substrate:** Concrete, plaster, masonry, gypsum.
- **Area of Use:** Interior with ability to overcoat if needed.
- **Finish:** Rough and plaster like.
- **Colour:** As per the end user demand.
- **Spread Rate:** Cover 1 to 1.5 m²/kg
The coverage is not very significant as it can be applied to varying thickness.
- **Drying Time (30° C):** Set to touch: 2 – 3 hours.
Ready for Recoat: at touch dry stage.

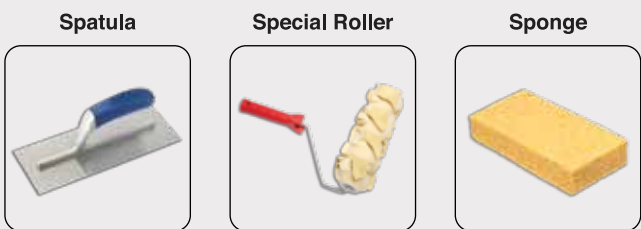
Typical Paint System

Recommended system to be applied as per surface preparation.



*stir well before usage.

RECOMMENDED TOOLS:



For more details on our way of application and method of use, follow our TDS.

Pitone



PITONE is a top of the line water based finish that has the Python animal print finish. It creates a rough but appealing finish and can end up in different patterns utilizing the imagination of an artist and the skills of the applicator. The product can be over coated with patinato or lorento... to give a pleasing look. The product is very hygienic and has a good anti fungal properties.

- **Substrate:** Concrete, plaster, masonry, gypsum.
- **Area of Use:** Interior with ability to overcoat if needed.
- **Finish:** Rough and plaster like.
- **Colour:** As per the end user demand.
- **Spread Rate:** Cover 1 to 1.5 m²/kg
The coverage is not very significant as it can be applied to varying thickness.
- **Drying Time (30° C):** Set to touch: 2 – 3 hours.
Ready for Recoat: at touch dry stage.

Typical Paint System

Recommended system to be applied as per surface preparation.



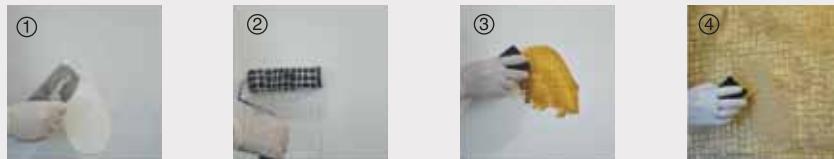
*stir well before usage.

RECOMMENDED TOOLS:



For more details on our way of application and method of use, follow our TDS.

Before to start any application of Cocodrillo, we must prepare the wall by using Ritver primer, stucco putty and emulsion top coat.



كوكو دريلو

من الأصباغ المائية العالية الجودة ، كما أنها يمكن المستخدم من الحصول على أشكال وتصاميم خشنة متنوعة وذلك حسب طريقة التطبيق .

يمكن حماية المنتج بإضافة طبقة من باتيناتو أو لورينتو ... وذلك لإعطاء أشكال متنوعة .

من محاسن أصباغ كوكو دريلو أنها مواد مضادة للتعفن وسهلة التطبيق .

أماكن الإستخدام: الأسطح الداخلية (الإسمنت ، الطابوق ، الجبس)

الملمس : خشن و نافر

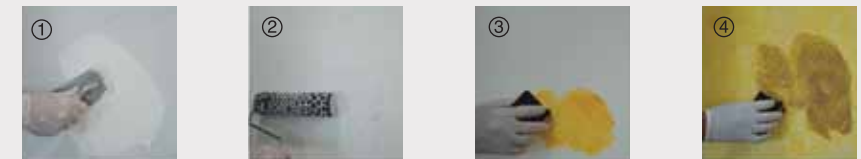
الألوان : حسب الطلب .

معدل التغطية : 1 – 1.5 متر مربع / لتر حسب السماكة المطلوبة

معدل الجفاف (30 درجة مئوية) : 2 – 3 ساعات .

لطبقة ثانية يجب الإنتظار حين إنتهاء مرحلة جفاف الطبقة الأولى .

Before to start any application of Pitone, we must prepare the wall by using Ritver primer, stucco putty and emulsion top coat.



بيتوني

من الأصباغ المائية العالية الجودة كما أنها يمكن المستخدم من الحصول على أشكال وتصاميم خشنة متنوعة وذلك حسب طريقة التطبيق .

يمكن حماية المنتج بإضافة طبقة من باتيناتو أو لورينتو ... وذلك لإعطاء أشكال متنوعة .

من محاسن أصباغ بيتوني أنها مواد مضادة للتعفن وسهلة التطبيق .

أماكن الإستخدام: الأسطح الداخلية (الإسمنت ، الطابوق ، الجبس)

الملمس : خشن و نافر

الألوان : حسب الطلب .

معدل التغطية : 1 – 1.5 متر مربع / لتر حسب السماكة المطلوبة

معدل الجفاف (30 درجة مئوية) : 2 – 3 ساعات .

لطبقة ثانية يجب الإنتظار حين إنتهاء مرحلة جفاف الطبقة الأولى .

Decorative Products



ARTISTA is a top of the range specially formulated acrylic emulsion based latex coating pigmented system with the right properties to build various decorative patterns. Its good virtues include good washability, superior scrub resistance, smooth finish, color acceptance & retention property and a superior finish. Its unique formula is specially designed to match ambience of the interiors and decorations thereof.



ATMOSPHERA is a top of the range specially formulated acrylic emulsion based latex coating pigmented system with the right properties to build various decorative patterns. Its good virtues include good washability, superior scrub resistance, colour acceptance & retention property and a superior finish. Its unique formula is specially prepared to match ambience of the interiors and decorations thereof.



ITALIAN STUCCO is a top class water based marble finish which enriches the ambience of the interiors of the room. It creates a shiny marble type finish and ends up in boundless patterns utilizing the imagination of an artist and the skills of the applicator and forms attractive marble like effects on various surfaces. The finish can be extended to different patterns of various colors and also accepts metallic pigments like gold, silver, pearl finish etc., the product is very hygienic and has good anti fungal properties.



LORENTO is a top of the range specially formulated acrylic emulsion based latex coating pigmented system with the right properties to build various decorative patterns. Its good virtues include good washability, superior scrub resistance, smooth finish, colour acceptance & retention property and a superior finish. Its unique formula is specially prepared to match golden ambience of the interiors and decorations thereof.



MARMARINO is a top class water based finish which enriches the ambience of the interiors of the room. It creates a marble type finish and ends up in boundless patterns utilizing the imagination of an artist and the skills of the applicator and forms attractive marble like effects on various surfaces. The finish can be extended to different patterns of various colors. The product is very hygienic and has well anti-fungal properties.



MULTICOPEARLO is a top of the range specially formulated acrylic emulsion based latex coating pigmented system with the right properties to build various decorative patterns. Its good virtues include good washability, superior scrub resistance, smooth finish, colour acceptance & retention property and a superior finish. Its unique formula is specially designed to match ambience of the interiors and decorations thereof. It gives a multicolor pearl effect where you can see different colors can be seen at the same time by just changing the viewing angle.



EFFETTO JEANS is a top of the range specially formulated acrylic emulsion based latex coating pigmented system with the right properties to build various decorative patterns. Its good virtues include good washability, superior scrub resistance, smooth finish, colour acceptance & retention property and a superior finish. Its unique formula is specially prepared to match ambience of the interiors and decorations thereof. This effect has the exact finish of the original jeans.



PATINATO is a top of the range specially formulated acrylic emulsion based latex coating with the right properties to build various decorative patterns. Its good virtues include good washability, superior scrub resistance, smooth finish, color acceptance & retention property and a superior finish. Its unique formula is specially prepared to match ambience of the interiors and decorations thereof.



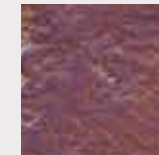
PERLATO EFFETTO is a top of the range specially formulated acrylic emulsion based latex coating pigmented system with the right properties to build various decorative patterns. Its good virtues include good washability, superior scrub resistance, smooth finish, colour acceptance & retention property and a superior finish. Its unique formula is specially prepared to match ambience of the interiors and decorations thereof. It gives a pearly shiny effect.



THICKNESS STUCCO is a top of the line water based finish that brings history to the present day era. It exhibits a finish very much akin to the historical concepts of the paintings and enhances a richness with a traditional look. It creates a rough but appealing finish and can end up in different patterns utilizing the imagination of an artist and the skills of the applicator. The product can be over coated with patinato or lorento... to give a pleasing look. The product is very hygienic and has a good anti fungal properties.



SANDICA is a top of the range specially formulated acrylic emulsion based latex coating pigmented system with the right properties to build various decorative patterns. Its good virtues include good washability, superior scrub resistance, color acceptance & retention property and a superior finish. Its unique formula is specially prepared to match ambience of the interiors and decorations thereof. This effect has the exact sand finish.



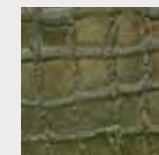
FERRO ANTICO is a top class water based finish which enriches the ambience of the interiors of the room. It creates an antique type finish and ends up in boundless patterns utilizing the imagination of an artist and the skills of the applicator and forms attractive effects on various surfaces. The finish can be extended to different patterns of various colors. The product is very hygienic and has well anti-fungal properties.



TRAVERTINO is a top class water based finish which enriches the ambience of the interiors of the room. It creates a marble type finish and ends up in boundless patterns utilizing the imagination of an artist and the skills of the applicator and forms attractive marble like effects on various surfaces. The finish can be extended to different patterns of various colors. The product is very hygienic and has good anti-fungal properties.



AMALFI is a top of the range specially formulated acrylic emulsion based latex coating pigmented system with the right properties to build various decorative patterns. Its good virtues include good washability, superior scrub resistance, smooth finish, colour acceptance & retention property and a superior finish. Its unique formula is specially prepared to match ambience of the interiors and decorations thereof. It gives a pearly shiny effect.



COCOCDRILLO is a top of the line water based finish that has the Crocodile animal print finish. It creates a rough but appealing finish and can end up in different patterns utilizing the imagination of an artist and the skills of the applicator. The product can be over coated with patinato or lorento... to give a pleasing look. The product is very hygienic and has a good anti fungal properties.



SABBIA PERLATA is a top of the range specially formulated acrylic emulsion based latex coating pigmented system with the right properties to build various decorative patterns. Its good virtues include good washability, superior scrub resistance, colour acceptance, retention property and a superior finish. Its unique formula is specially prepared to match ambience of the interiors and decorations thereof. It has the effect of fine pearly sand.



METALLICO is a top class water based finish which enriches the ambience of the interiors of the room. It creates a modest type finish and ends up in boundless patterns utilizing the imagination of an artist and the skills of the applicator and forms attractive marble like effects on various surfaces. The finish can be extended to different patterns of various colors. The product is very hygienic and has well anti-fungal properties.



POMICE is a top class water based marble finish which enriches the ambience of the interiors of the room. It creates a shiny marble finish and ends up in boundless patterns utilizing the imagination of an artist and the skills of the applicator. The finish can be extended into different patterns of various colors and also embrace metallic pigments like gold, silver, pearl finish etc., The product is very hygienic and has good anti fungal properties. The maintenance cost if very low as it requires only touch up after a little sanding.



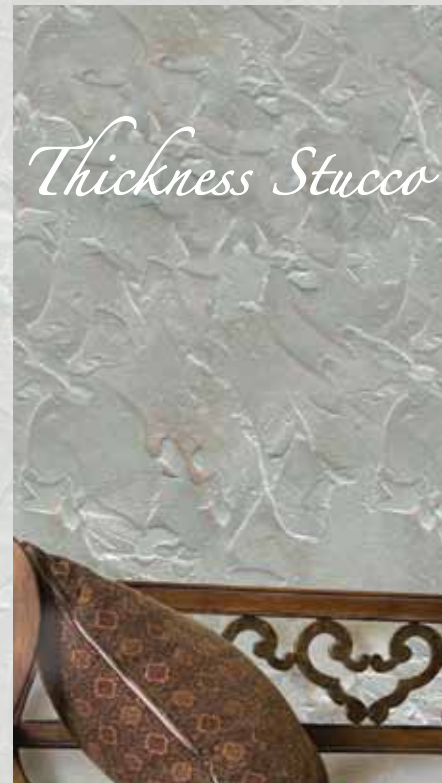
RUSTICO is a top of the range specially formulated acrylic emulsion based latex coating pigmented system with the right properties to build various decorative patterns. Its good virtues include good washability, superior scrub resistance, colour acceptance, retention property and a superior finish. Its unique formula is specially prepared to match ambience of the interiors and decorations thereof. It has the effect of fine pearly sand.



PITONE is a top of the line water based finish that has the Python animal print finish. It creates a rough but appealing finish and can end up in different patterns utilizing the imagination of an artist and the skills of the applicator. The product can be over coated with patinato or lorento... to give a pleasing look. The product is very hygienic and has a good anti fungal properties.



Cocodrillo



Thickness Stucco



Pitone



Ritver Toll Free Number
800 PAINTS
(724687)

Follow us on
Twitter

an us on
facebook



Scan this QR CODE
for RITVER information



Manufactured by Emver Paints Industry L.L.C which is member of EGBC

UAE | OMAN | QATAR | KSA | IRAQ | LEBANON | ITALY | NIGERIA | CANADA

U.A.E: Unit No. 1104-1109, 1 Lake Plaza Flat No. P112 - T2 Jumeirah Lake Towers Dubai, UAE P.O. Box 47381
Tel: 800 PAINTS (Toll Free Hotline in UAE) ; +971 4 4504286 ; +971 4 4504287 | **Fax:** +971 4 4504274 ; +971 4 4504275 | info@ritver.com



ISO 9001-2008, ISO 14001-2004, ISO 18001-2007



www.ritver.com